

6 7/8" [174.625]

6 3/8" [162.4]

6" [152.4]

5 1/8" [139.7]

5 1/16" [133.025]

5" [127]

4 9/16" [115.875]

2 5/8" [66.675]

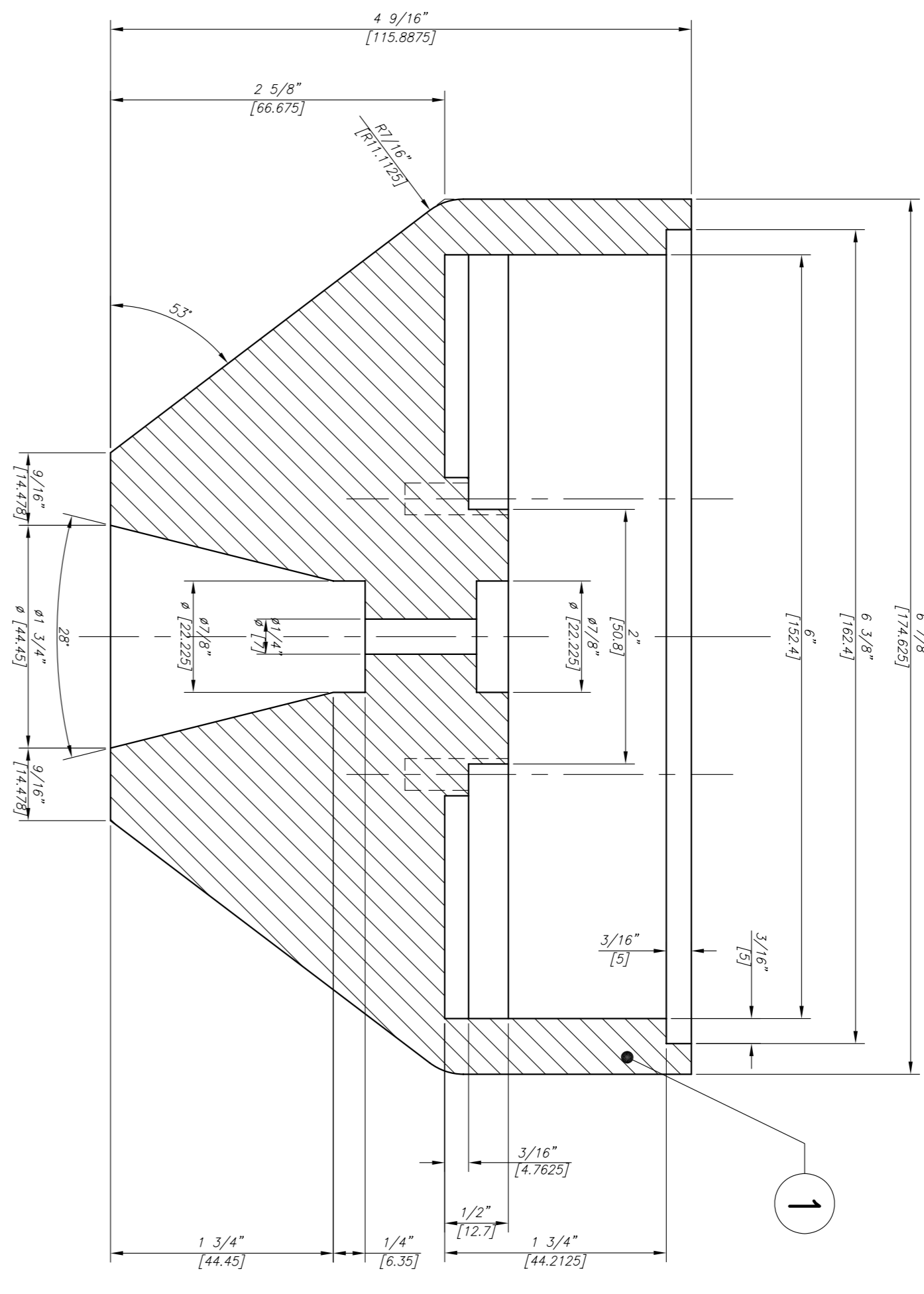
2" [50.8]

1 5/8" [41.275]

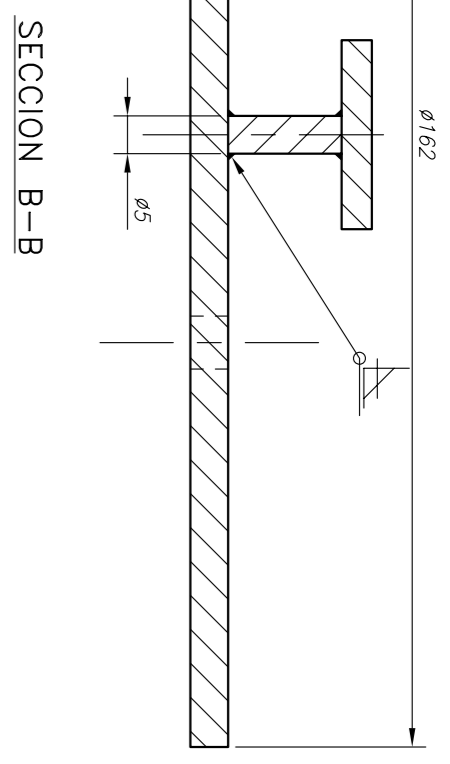
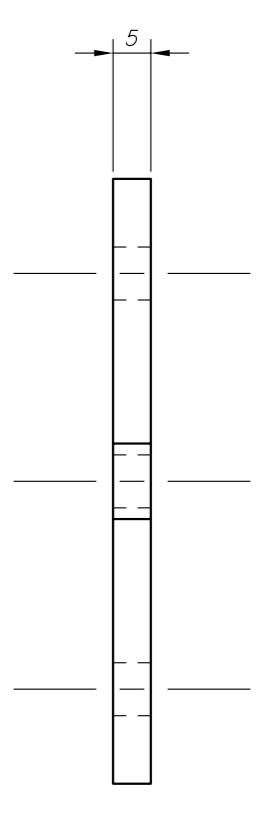
1 3/4" [44.45]

1 1/4" [31.75]

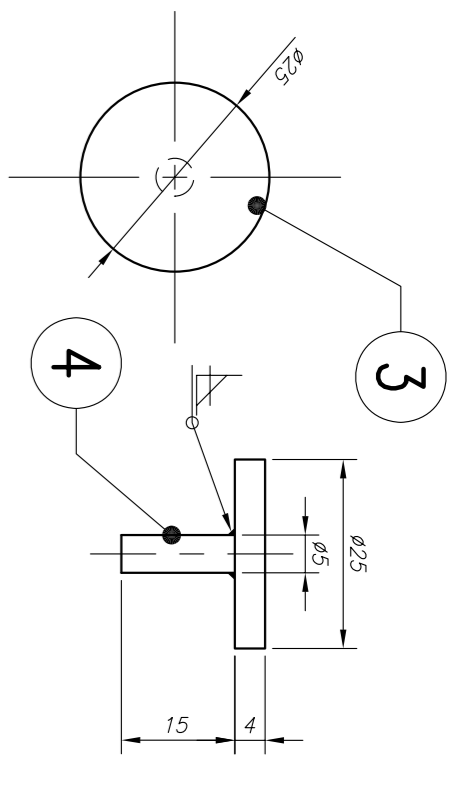
1" [25.4]



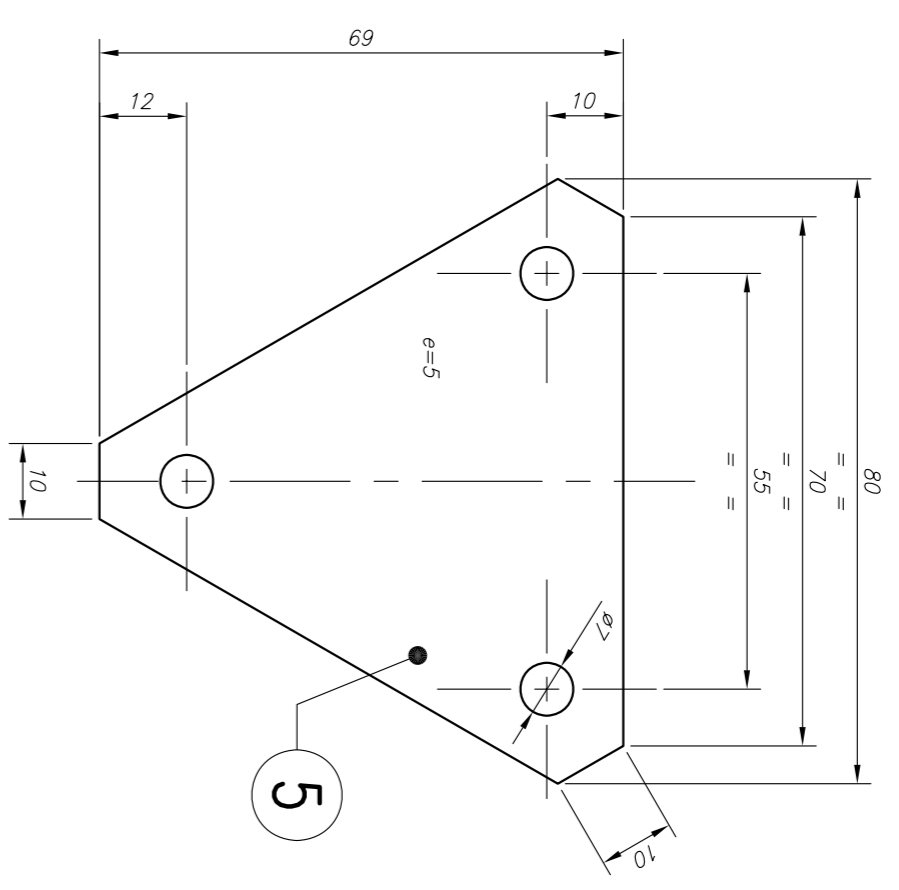
SECCION A-A



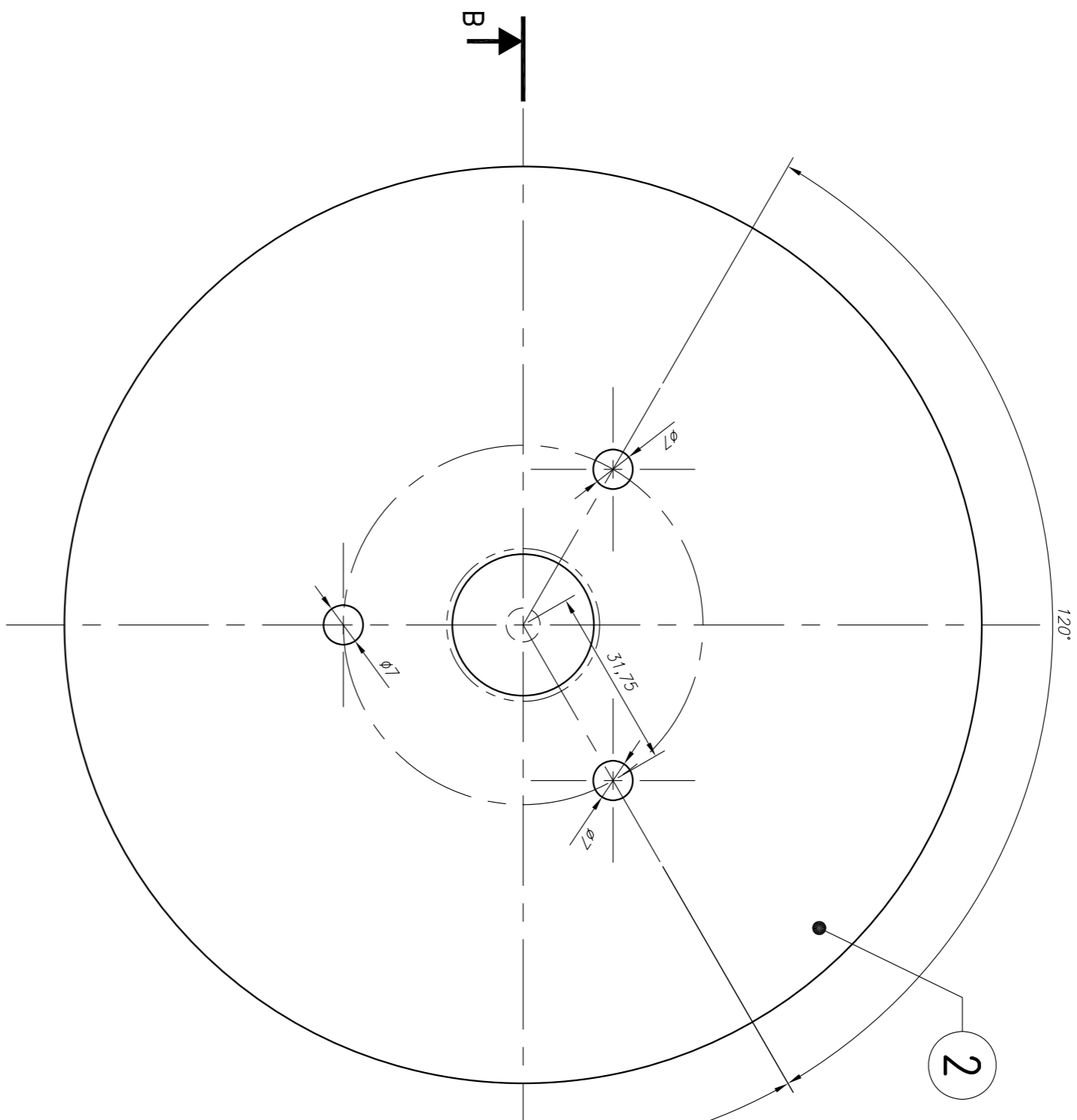
SECCION B-B



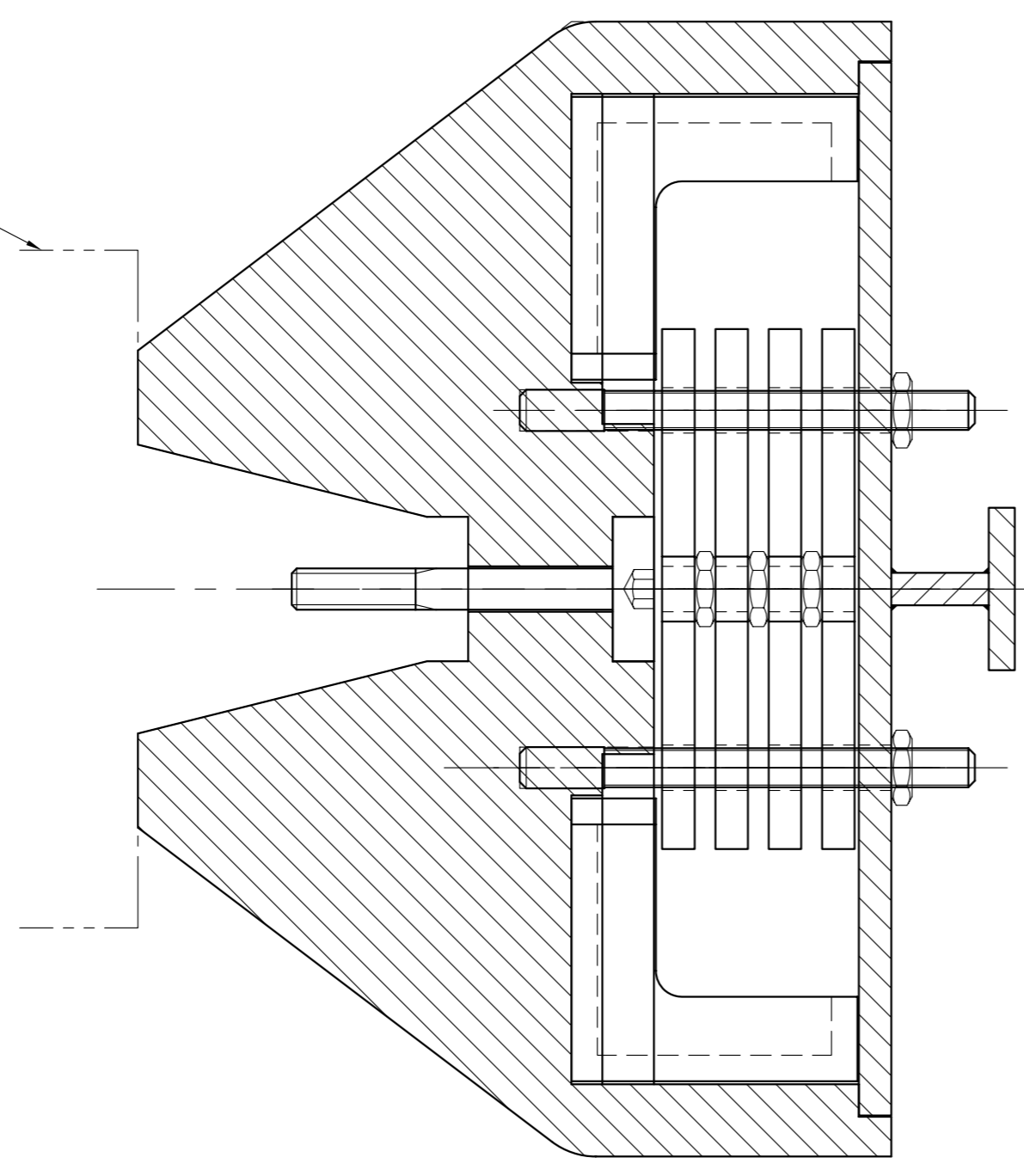
TIRADOR (1 Unidad)



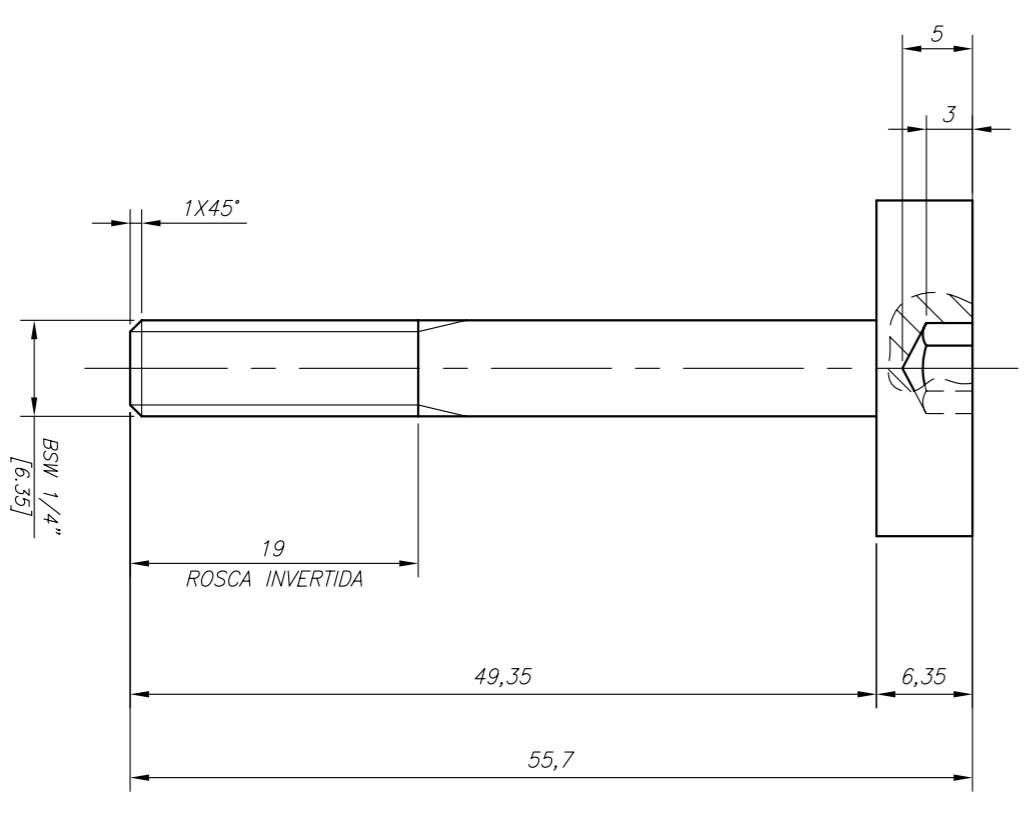
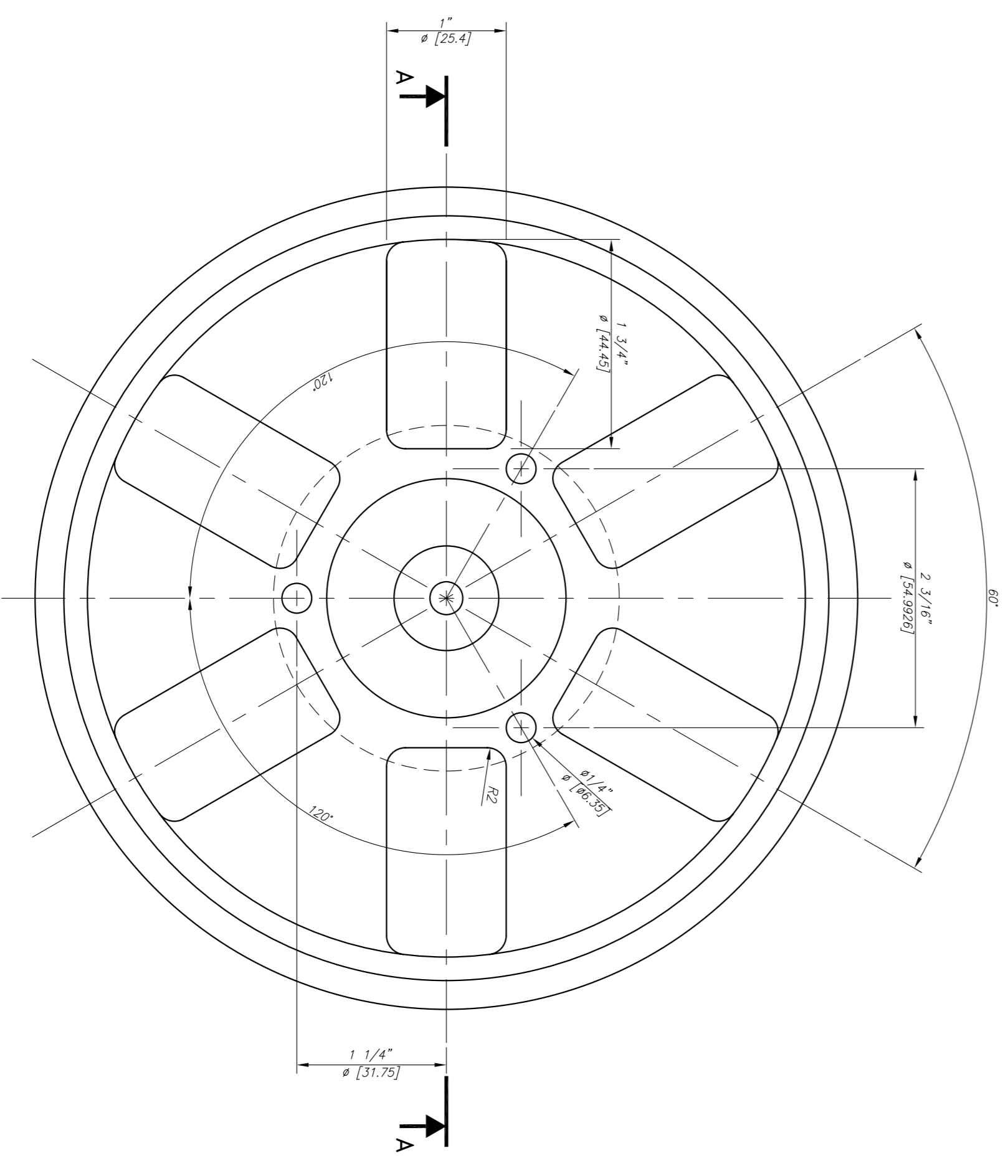
PLETINA POS.5 (4 Unidades)



TAPA POS.2 (1 Unidad)

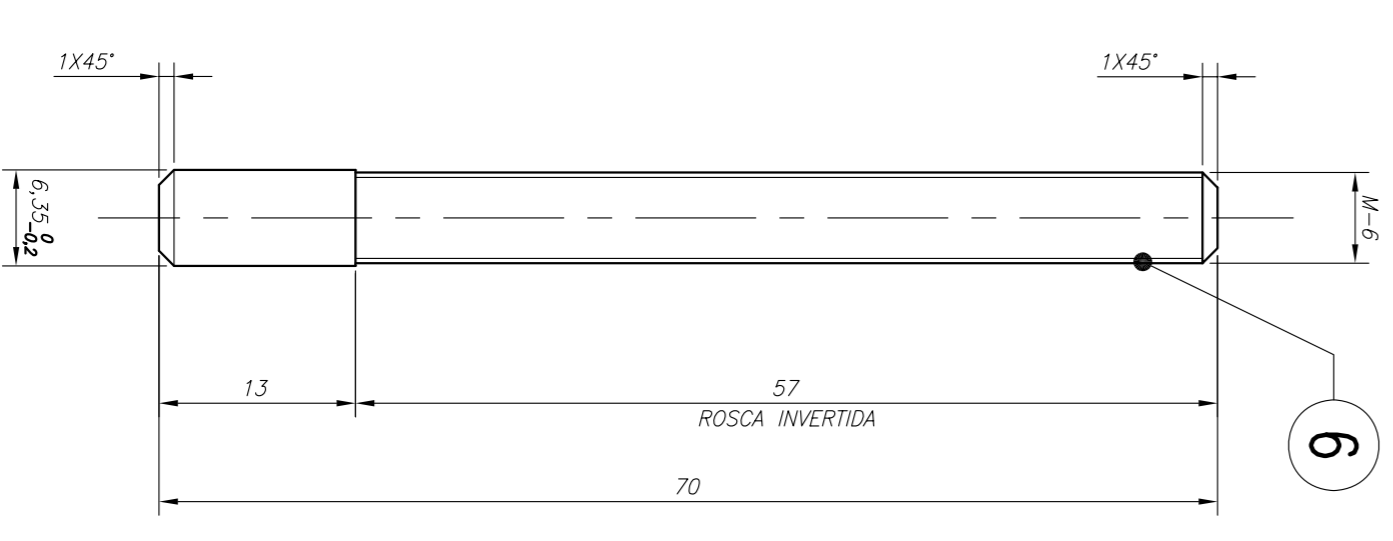


CONJUNTO



TORNILLO POS.7

E=2/1
Acero S 275 JR
(1 Unidad)



VARILLA POS.6

E=2/1
Acero S 275 JR
(3 Unidades)

MATERIAL	Partido	Peso	Escalas:	N° Plano:	Revisión:
REDONDO Ø 175	1	1	1/1	011-100-01	A
PLETINA E=5 mm	2	1	1/1		
PLETINA E=4 mm	3	1	1/1		
REDONDO Ø25 mm	4	1	1/1		
PLETINA E=5 mm	5	4	1/1		
VARILLA ROSCADA M=6	6	3	1/1		
TORNILLO ESPECIAL BSW 1/4"	7	1	1/1		
TUERCA DIN-439 2 M=6	8	12	1/1		
RECIPENTE INTERNO	9	4	1/1		

① TODAS LAS SOLDADURAS SON CONTINUAS DE 0,7 VECES EL ESPESOR MÍNIMO A SOLDAR . EXCEPTO LAS INDICADAS
 ② TODAS LAS PIEZAS SERÁN REALIZADAS EN ALUMINIO 7075 T6 EXCEPTO LAS INDICADAS, FABRICADAS EN ACERO S 275 JR.

Rev.	Fecha	Objeto de la revisión	Dibujado	Comprobado	Materia:	Peso:	Escalas:	N° Plano:	Revisión:
5									
4									
3									
2									
1	17-03-11	PARA FABRICACION	PHD	MDV			1/1		
0							1/1		